

Pointhouse

PANCA KRONO

Design Pointhouse

Scheda tecnica
/Technical sheet



Panca con struttura in metallo ed apertura telescopica

Lineare e rigorosa nella forma può essere posizionata in spazi più o meno compatti per creare aree di attesa o di relax secondo le esigenze; oppure collocata all'interno degli spazi della casa. Struttura allungabile con apertura telescopica composta da profili in acciaio tagliati a laser, verniciata a polveri epossidiche o inox spazzolato. Giunto angolare d'unione stampato in lega di alluminio, in finitura spazzolata lucida o verniciata. Gambe in acciaio verniciato o inox spazzolato. Seduta, schienale ed allunghe sono rivestiti in tessuto, disponibile in vari colori e trame.

/Bench with metallic structure with telescopic opening system

Linear and rigorous in its shapes can be placed in more or less compact spaces to create waiting or relax areas, as required, or used inside the house.

Extendable structure with telescopic opening system made with laser-cut metallic profiles, in epoxy painted steel or brushed inox. Die-casted aluminium alloy angular junction, in glossy or brushed finish. Legs in epoxy painted steel or brushed inox. The seat, backseat and extensions are fabric covered, available in various colours and textures.

MISURE / SIZE:

PANCA /BENCH KRONO 125 125X55X85H

PANCA /BENCH KRONO 165 165(210)X55X85H

OPTIONAL

SCHIENALE IMBOTTITO IN TESSUTO TRICK O FLASH
UPHOLSTERED BACKSEAT WITH TRICK OR FLASH FABRIC

GAMBA DROP / QUADRO / OTELLO
DROP / QUADRO / OTELLO LEGS

PESO & IMBALLO / WEIGHT & PACKING:



Numero colli
Boxes number

KRONO 125

1 collo per struttura+gambe:
1 box per frame and legs:
cm 119x39x16 - Kg. 19

1 collo per piano:
1 box per seat:
cm 65x47x10 - Kg. 19

m3 0,103 tot. Kg. 38

KRONO 165

1 collo per struttura+gambe:
1 box per frame and legs:
cm 159x39x16 - Kg. 21

1 collo per piano+allunghe:
1 box per seat + extensions:
cm 85x47x10 - Kg. 24

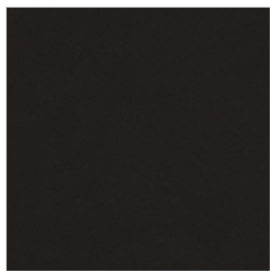
m3 0,137 tot. Kg. 45

FINITURE / FINISHES:

Struttura e gambe / Structure and legs:

Metallo verniciato

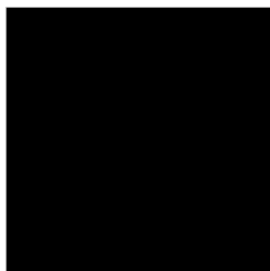
Painted metal



0G GHISA
CAST IRON



06 BIANCO OPACO
MATT WHITE



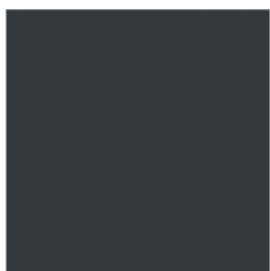
07 NERO OPACO
MATT BLACK



18 GRIGIO SILVER
SILVER GREY



22 TORTORA
DOVE GREY



0P GRIGIO PIOMBO OPACO
MATT LEAD GREY

FINITURE / FINISHES:

Seduta / seat:

Melamminico / Cleaf / tessuto
melamine / Cleaf / fabric

Melamminico

E' un rivestimento prefinito e viene ottenuto utilizzando carte (stampate) impregnate e spalmate sul lato decorativo con resine melaminiche (es. pannelli di truciolare o mdf) garantendo ottima stabilità e una sufficiente resistenza all'usura.



8P ROVERE CRUDO
RAW OAK



8S QUERCIA BIANCO
WHITE OAK

/Melamine

It is a prefinished covering and it is obtained by using impregnated and coated papers on the decorative side with melamine resins (ex. Chipboard panels or mdf) guaranteeing an excellent stability and a sufficient wear resistance.

CLEAF

Marmo: una finitura morbida e setosa che si abbina a decorativi tinta unita o effetto pietra.

Legno: L'effetto spazzolatura tipico delle essenze lignee lavorate da abili mani artigiane.

Beton: Ispirata alle murature urbane dell'architettura industriale, ripropongono la profondità di una parete in calcestruzzo o intonaco spatolato.

Marble: A soft and silk-smooth finish that can match solid colour or stone elements.

Wood: The brushed effect typical of the wood essences worked by skilled handcraft.

Beton: Inspired by urban walls typical of industrial architecture, reintroduce the depth of a concrete or plaster wall.



7A BIANCO
WHITE



7B TORTORA
DOVE GREY



7D GRIGIO
GREY



7E GRAFITE
GRAPHITE



7F ROVERE NATURALE
NATURAL OAK



7G ROVERE COTTO
BURNISHED OAK



7I MARMO BIANCO
WHITE MARBLE



7M MARMO GRIGIO
GREY MARBLE



7L MARMO NERO
BLACK MARBLE

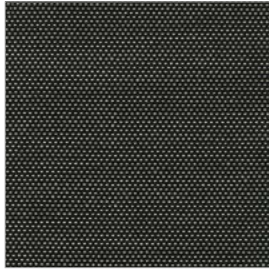


7N LECCIO
HOLM OAK

Tessuto Angel Trick / Angel Trick fabric



T101



T221



T301



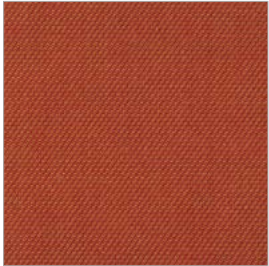
T302



T303



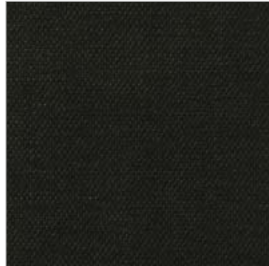
T304



T306



T400



T406



T701



T702



T703



T704



T801



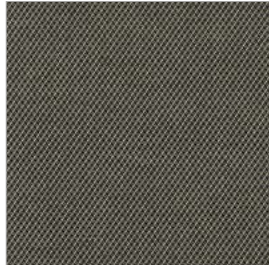
T803



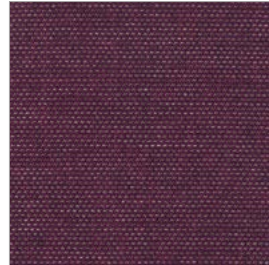
T204



T405



T602



T900



abitex

abitex srl
via del cristo 84
33044 manzano
ud - italy

t +39 0432 746060
www.abitex.eu
info@abitex.eu

angel trick 08163



IT

codice doganale

54072011.

utilizzo

tende, imbottiti.

caratteristiche

100% polipropilene, altezza cm \pm 140,
peso \pm 350 gr/m².

tintura

il prodotto é tinta in massa.

lunghezza pezze

circa 35 mtl.

abrasione

50.000 cicli, ISO 12947-2.

solidità alla luce

4-5, ISO 105 B02.

solidità allo sfregamento

secco 5, umido 4/5, ISO 105 X12.

resistenza alla cucitura

ordito 3 mm, trama 2 mm, ISO 13936-2.

pilling

4-5, ISO 12945-2.

resistenza al fuoco

1IM - UNI 9175; EN 1021 1/2; BS 5852 crib 5;
NF D 60 013; California TB 117-2013;
IMO FTP Code 307 part 8.

attenzione

sono ammesse leggere differenze di colore tra differenti partite.

EN

customs code

54072011.

use

curtains, upholstered furniture.

features

100% polypropylene, width cm \pm 140,
weight \pm 350 g/m².

dyeing

solution dyed product.

roll length

approx. 35 lm.

abrasion resistance

50.000 rubs, ISO 12947-2.

colour fastness to light

4-5, ISO 105 B02.

fastness to rubbing

dry 5, wet 4/5, ISO 105 X12.

seam slippage

warp 3 mm, weft 2 mm, ISO 13936-2.

pilling

4-5, ISO 12945-2.

fire resistance

1IM - UNI 9175; EN 1021 1/2; BS 5852 crib 5;
NF D 60 013; California TB 117-2013;
IMO FTP Code 307 part 8.

attention

slight colour differences between different batches are allowed.



fireproof



imo-med

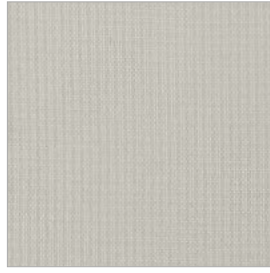
Tessuto Flash Nativa /Flash Nativa fabric



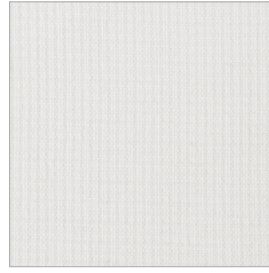
F001



F002



F101



F111



F200



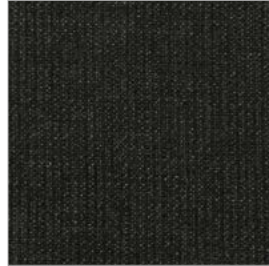
F300



F301



F305



F403



F500



F601



F700



F705



F707



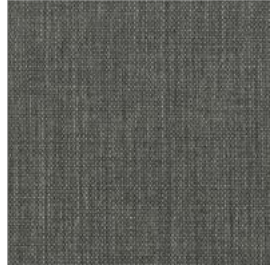
F800



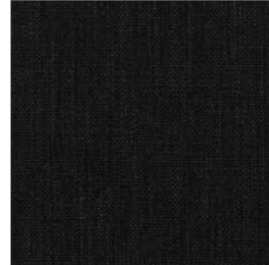
F804



F402



F600



F602



abitex

abitex srl
via del cristo 84
33044 manzano
ud - italy

t +39 0432 746060
www.abitex.eu
info@abitex.eu

flash nativa

08091



IT

codice doganale

54072011.

utilizzo

imbottiti.

caratteristiche

100% polipropilene, altezza cm \pm 140,
peso \pm 320 gr/m².

tintura

il prodotto é tinta in massa.

lunghezza pezze

circa 35 mtl.

abrasione

> 70.000 cicli, ISO 12947-2.

solidità alla luce

4-5, ISO 105 B02.

solidità allo sfregamento

secco 5, umido 4/5, ISO 105 X12.

resistenza alla cucitura

ordito 3 mm, trama 3 mm, ISO 13936-2.

pilling

4-5, ISO 12945-2.

attenzione

sono ammesse leggere differenze di colore tra differenti partite.

EN

customs code

54072011.

use

upholstered furniture.

features

100% polypropylene, width cm \pm 140,
weight \pm 320 g/m².

dyeing

solution dyed product.

roll length

approx. 35 lm.

abrasion resistance

50.000 rubs, ISO 12947-2.

colour fastness to light

4-5, ISO 105 B02.

fastness to rubbing

dry 5, wet 4/5, ISO 105 X12.

seam slippage

warp 3 mm, weft 3 mm, ISO 13936-2.

pilling

4-5, ISO 12945-2.

attention

slight colour differences between different batches are allowed.